

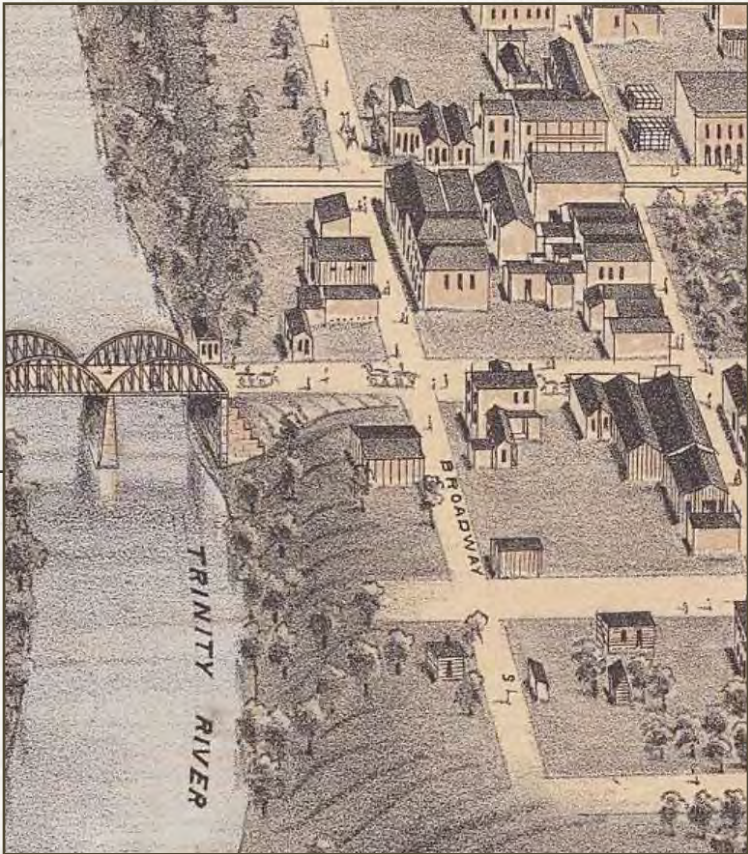


NEXT

Architecture  
&  
Design Studio

# SITE & RESEARCH

Dallas



Map of Dallas from 1872

Early 1900s



Dallas Cotton Millworkers in 1913

Textile Factories



Textile artisan working at the loom

THE  
POEM



*The Mill Was Made of Marble  
I dreamed that I had died  
And gone to my reward  
A job in heaven's textile plant  
On a golden boulevard.*

*The mill was made of marble  
The machines were made out of gold  
And nobody ever got tired  
And nobody ever grew old*

*The mill was built in a garden  
No dust or lint could be found  
The air was so fresh and fragrant  
With flowers and trees all around*

*It was quiet and restful in heaven  
There was no clatter or boom  
You could hear the most beautiful music  
As you worked at spindle and loom*

*There was no unemployment in heaven  
We worked steady all through the year  
We always had food for the children  
We never were haunted by fear*

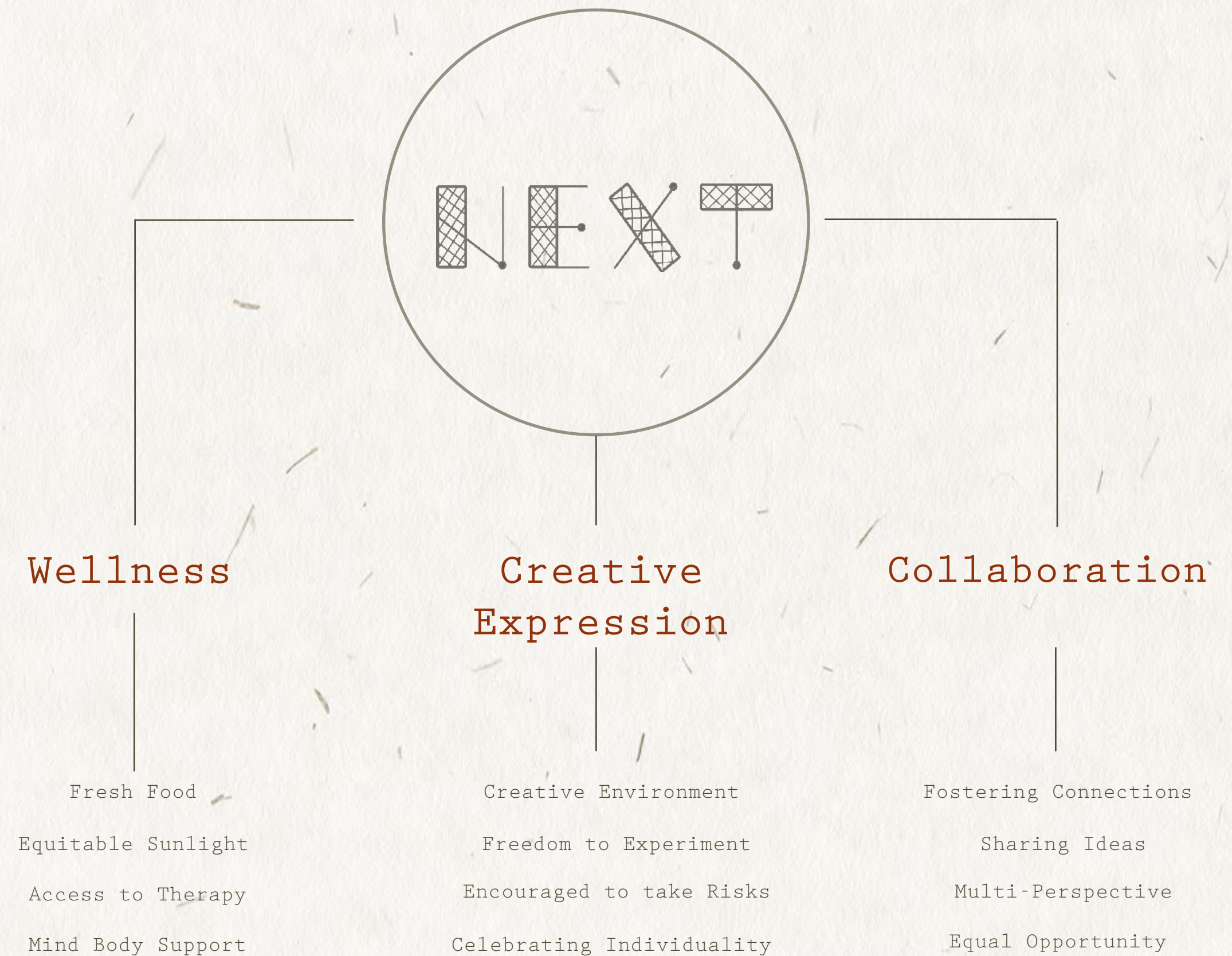
*When I woke from this dream about heaven  
I knew that there never could be  
A mill like that one down below here on earth  
For workers like you and like me.*

*- Joe Glazer (Dallas Union Millworker)*

# BRAND ETHOS

N E X T is an architecture and design company that values **wellness, creative expression,** and **collaboration** in the workplace.

Given the demanding nature of the architecture and design industry, N E X T prioritizes supporting its' employees' minds and bodies. Additionally, with design being a creative industry, N E X T welcomes and fosters experimentation as a part of its process. Finally, collaboration is recognized as an integral aspect of N E X T's culture and ethos.



# SPACE AND CONNECTIVITY

The process of making textiles—from thread to fabric—is a metaphor for *human connection* and *collaboration*.



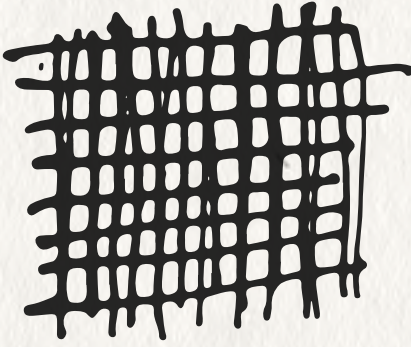

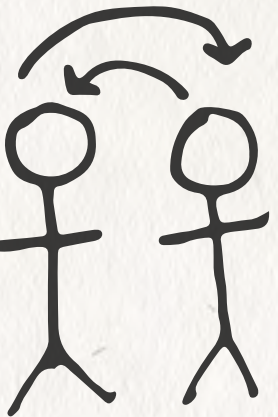
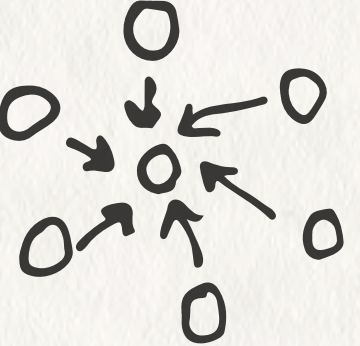
N E X T 's space is broken down into 3 types of spaces:

## Connectivity by Zone

Mezzanine

3rd Floor



		
Thread	Yarn	Fabric
Reflective	Social	Productive
Mother's Room Wellness Chapel Phone Room	Design Library Innovation Lab Huddle Rooms Cafe	Client Presentation Training Room Meeting Rooms Workstations
		

# INSPIRATION



Industrial



Light

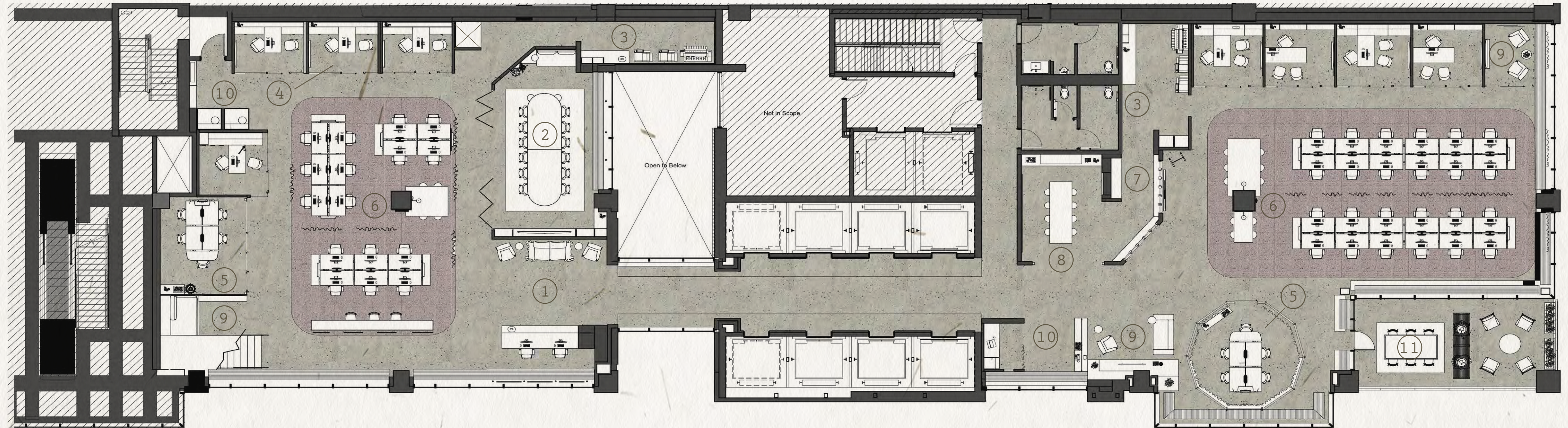


Artful



Muted

# FLOOR PLANS



THIRD FLOOR



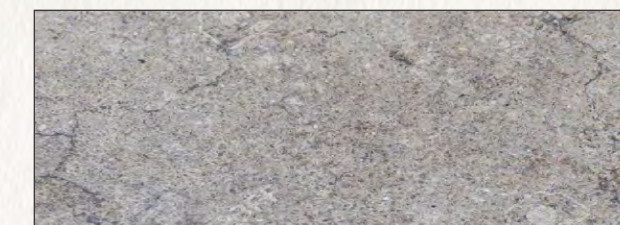
## LEGEND

- |                       |                   |                |
|-----------------------|-------------------|----------------|
| 1. Reception          | 5. Meeting Room   | 9. Huddle Room |
| 2. Large Meeting Room | 6. Work Area      | 10. Phone Room |
| 3. Resource Center    | 7. Design Library | 11. Patio      |
| 4. Private Office     | 8. Innovation Lab |                |

## FLOOR MATERIALS



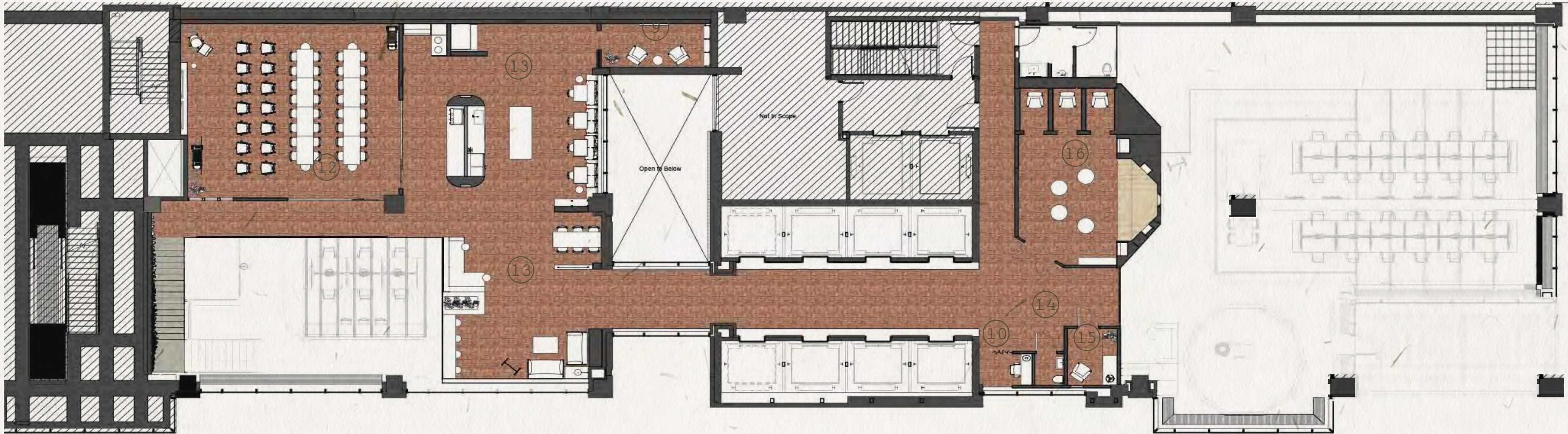
Limestone Tile



Honed Concrete



# FLOOR PLANS



MEZZANINE



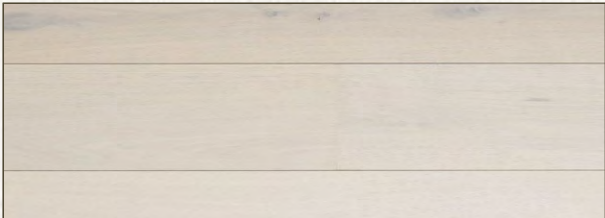
LEGEND

- 12. Training Room
- 13. Cafe
- 14. Bathroom
- 15. Mother's Room
- 16. Wellness Chapel

FLOOR MATERIALS



Reclaimed Brick

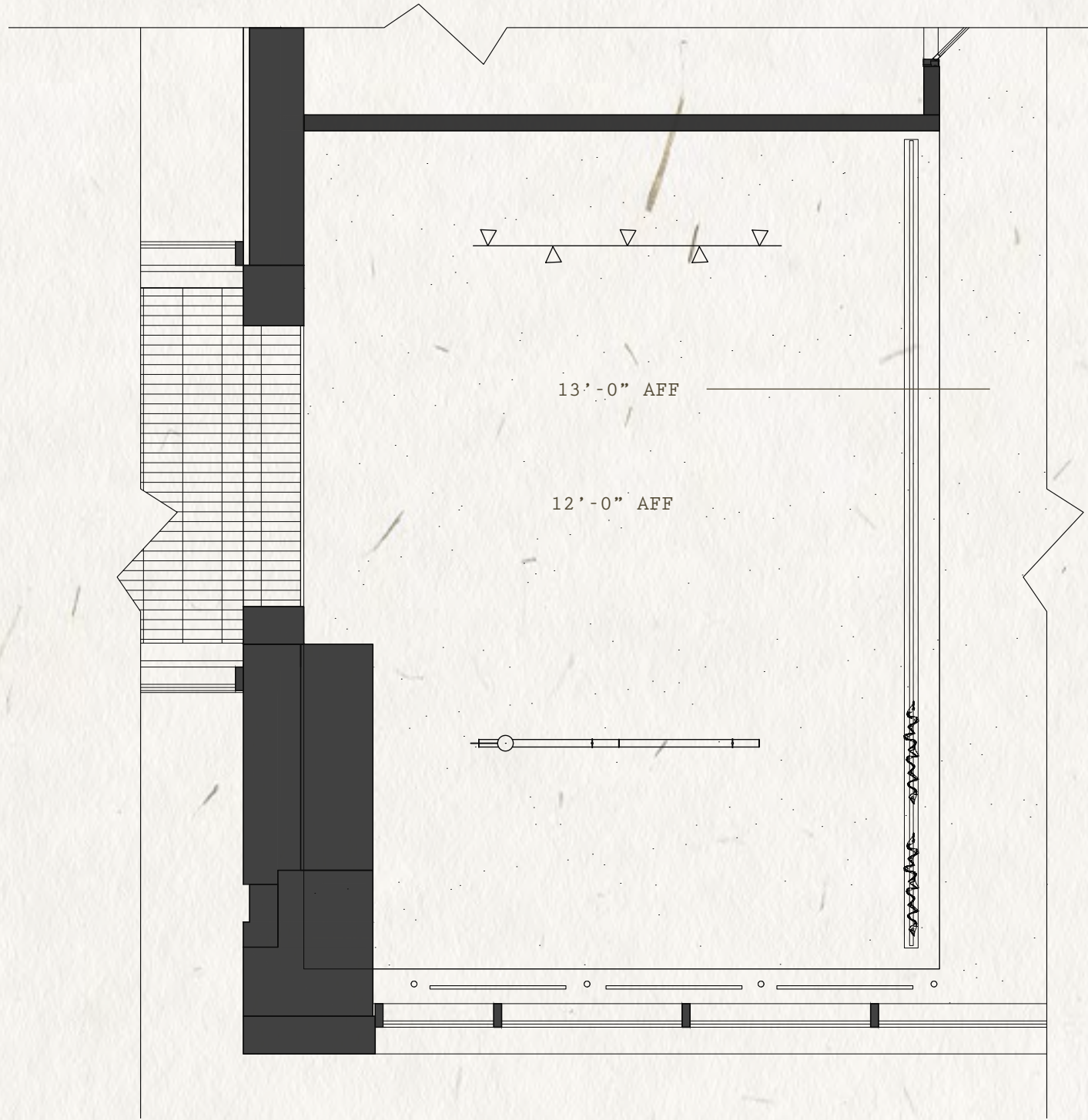


White Oak

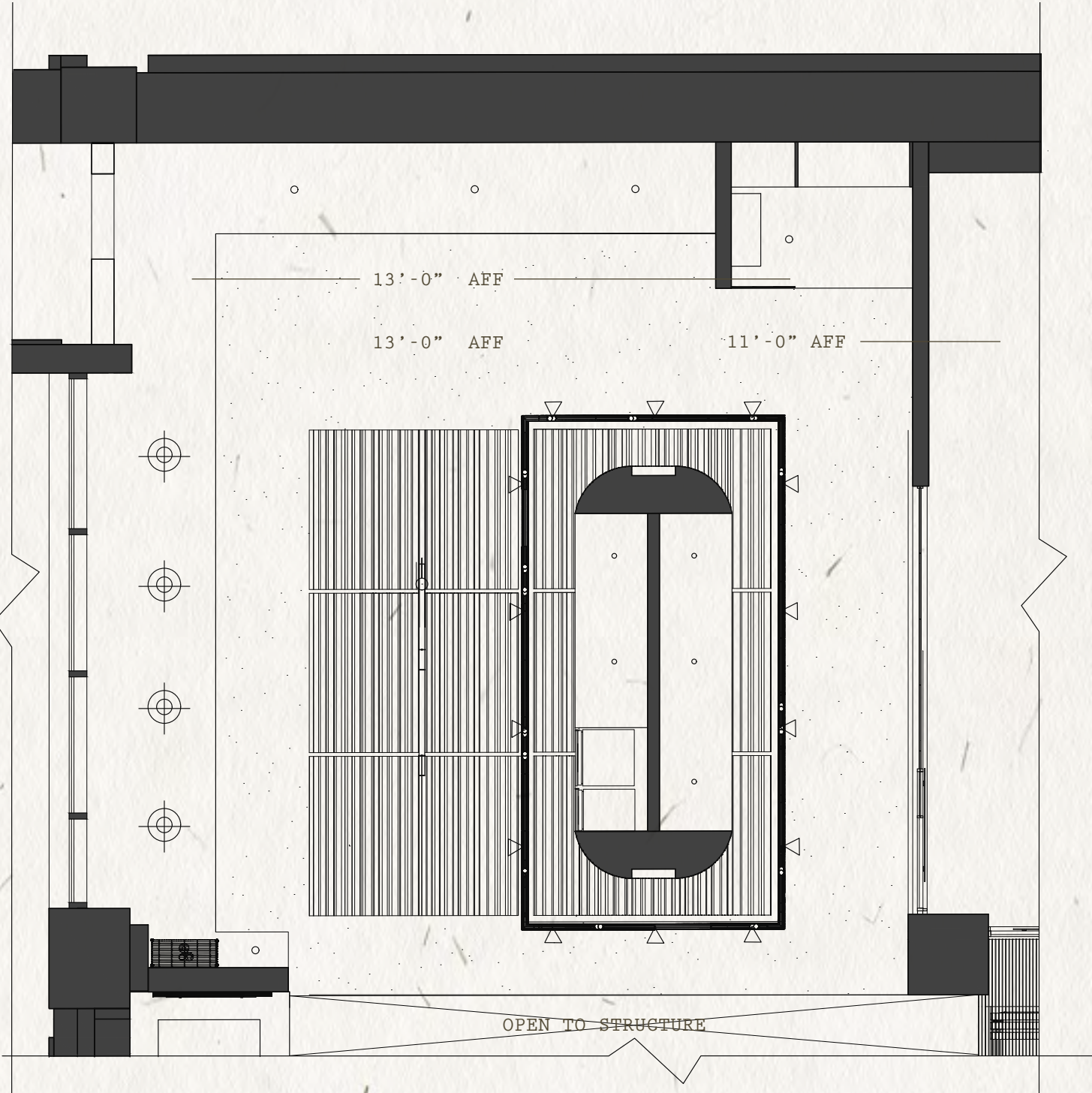




# REFLECTED CEILING PLANS



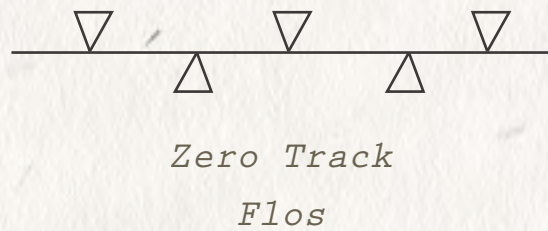
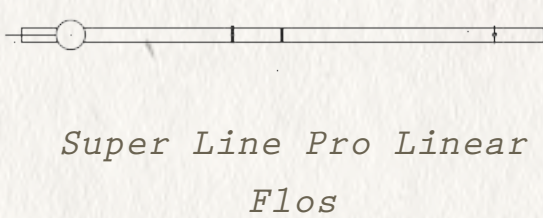
RECEPTION RCP



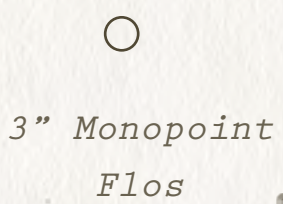
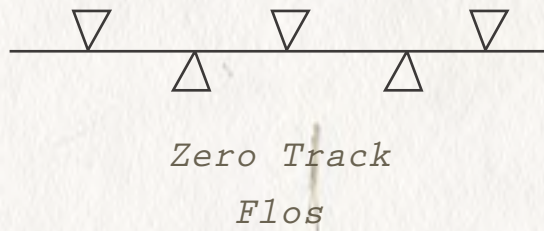
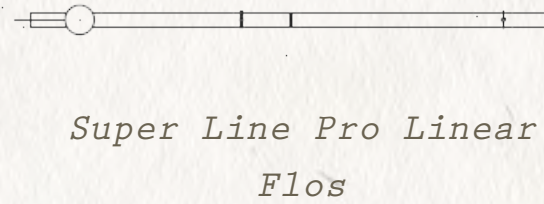
CAFE RCP



LEGEND



LEGEND





NEX

RECEPTION



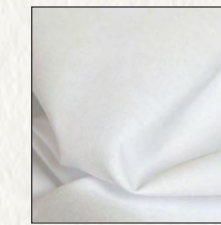
Materials



Steel  
Metal



Limestone  
Tile



Cotton  
Fabric

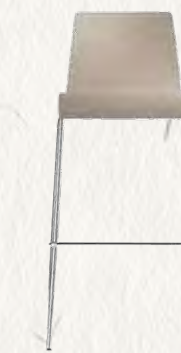


Aged  
Cement

FF&E



Cape Sofa  
Established &  
Sons



Barstool  
Barstool  
Blu Dot

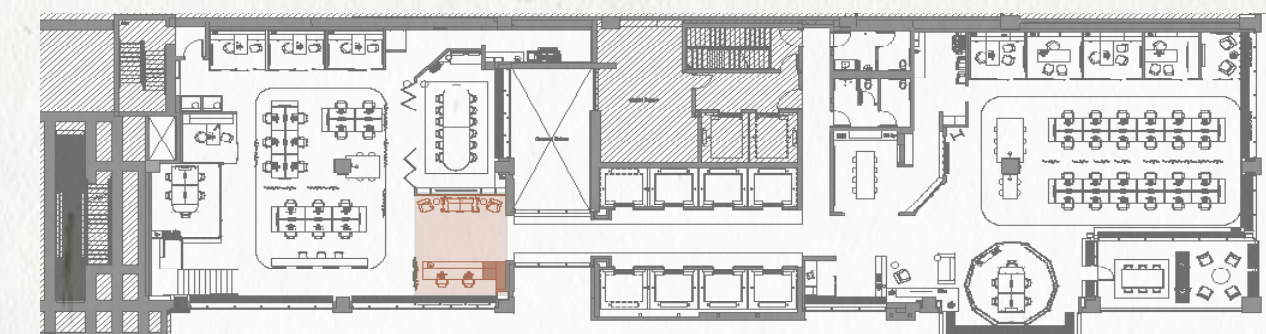


Superline Pro  
Flos



RECEPTION

When exiting the elevator the **RECEPTION** is located on the East Side. By keeping the line of sight open, visitors are immediately immersed into the workspace, conveying a welcoming and transparent company. The use of artful reception furniture like the *Cape sofa* from *Established & Sons* exhibits the company's effort to foster **CREATIVE EXPRESSION**.





WORKSTATIONS



*Materials*



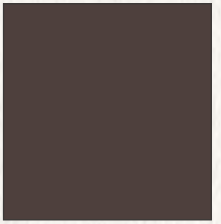
*Steel  
Metal*



*White Oak  
Wood*



*Undyed Cotton  
Fabric*



*Cola  
Paint*

*FF&E*



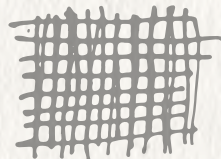
*Bivi Table  
Steelcase*



*Think Chair  
Steelcase*

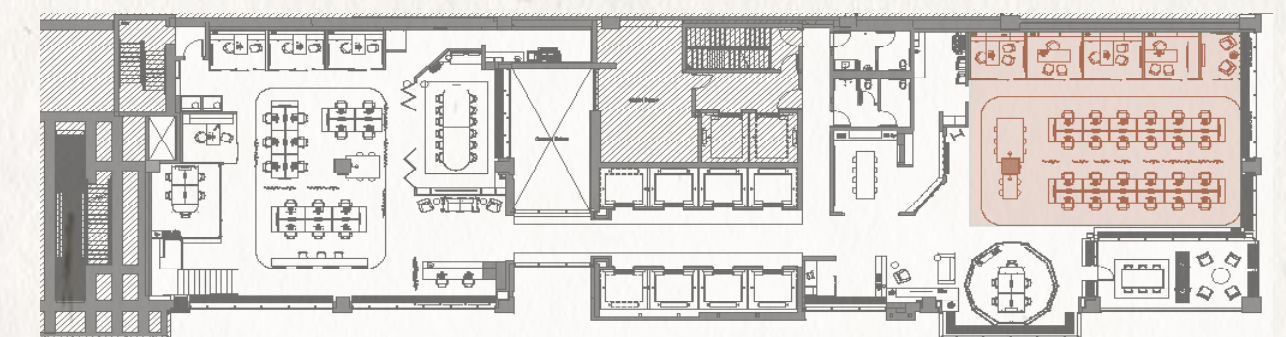


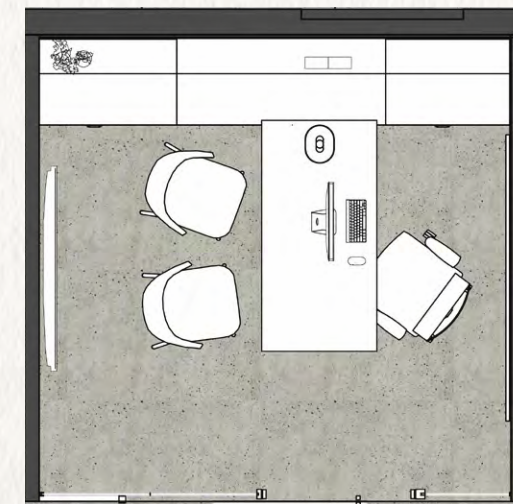
*Marker Screen  
Steelcase*



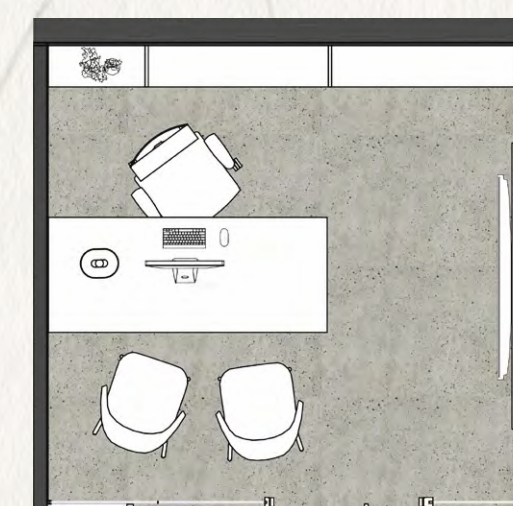
# WORKSTATIONS

When exiting the elevator, dedicated **WORKSTATIONS** are located on the West Side. Capped at the end of both benching stations are flexible work tables that invite different forms of **COLLABORATION**. The lower table on the left is intended for reviewing large documents, while the bar height table on the right offers a different working posture and can accommodate small team meetings.

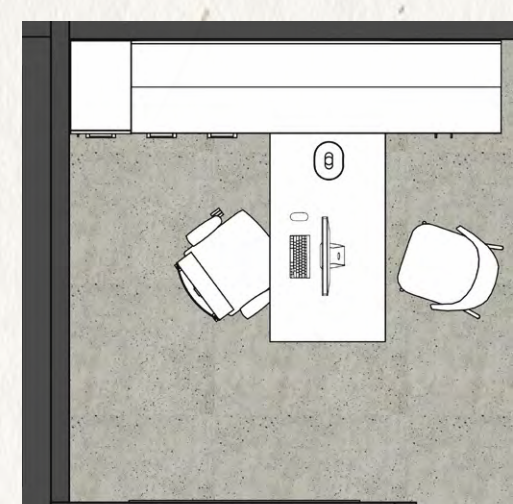




Option A



Option B



Option C

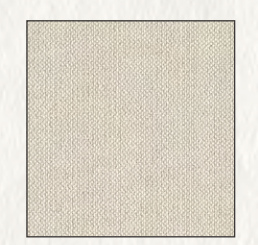
Materials



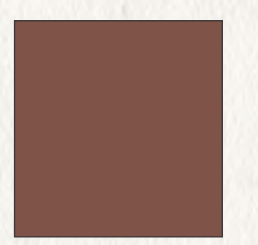
Vapor Paint



White Oak Wood

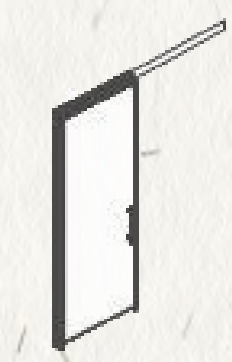


Rocket Fabric



Etruscan Red Paint

FF&E



V.I.A. Modular Wall System Steelcase



Tronco Chair Mattiazzi

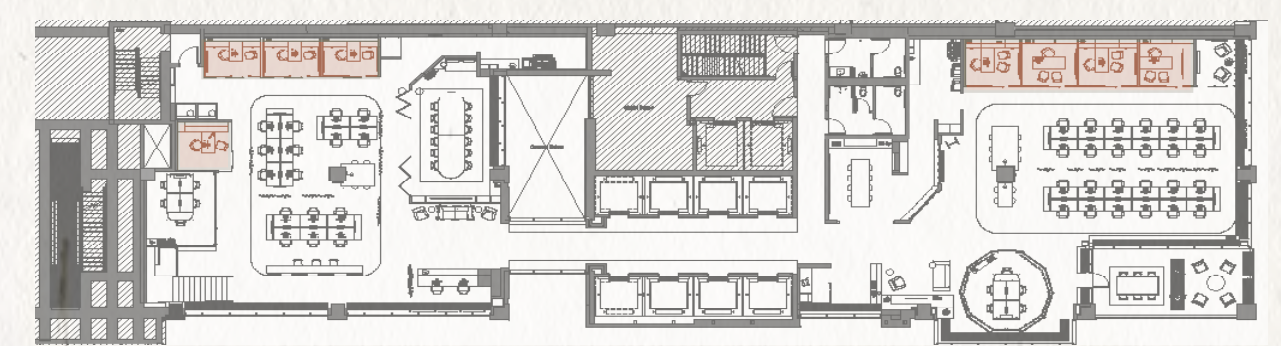


Smithfield Suspension Steelcase



PRIVATE OFFICES

N E X T offers 3 different Private Office layouts to accommodate different preferences and work styles. **Option A** has the most **closed storage** for individuals who like to keep their things hidden away. **Option B** has mostly **open shelving** for individuals who prefer to display their objects. **Option C** has an **adjustable desk** to accommodate those who prefer a standing option.





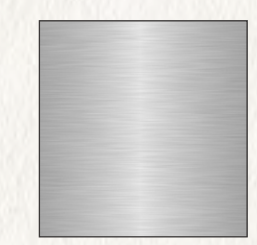
- [unreadable] [unreadable] [unreadable]  
- [unreadable] [unreadable] [unreadable] [unreadable]  
- [unreadable] [unreadable] [unreadable] [unreadable]  
- [unreadable] [unreadable] [unreadable] [unreadable]  
- [unreadable] [unreadable] [unreadable] [unreadable]  
- [unreadable] [unreadable] [unreadable] [unreadable]

[unreadable] [unreadable] [unreadable]

STAIRCASE



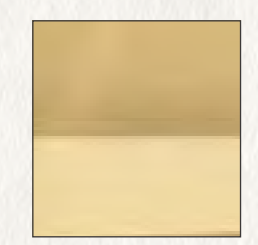
*Materials*



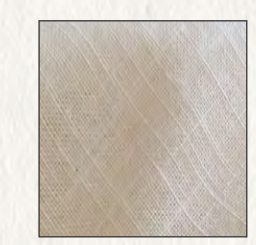
*Steel  
Metal*



*Stone Tile  
Limestone*



*3Form  
Glass*



*Undyed Cotton  
Fabric*

*FF&E*



*Marker Board  
Steelcase*



*Open Plan Long And  
Low Bookcase  
Blu Dot*

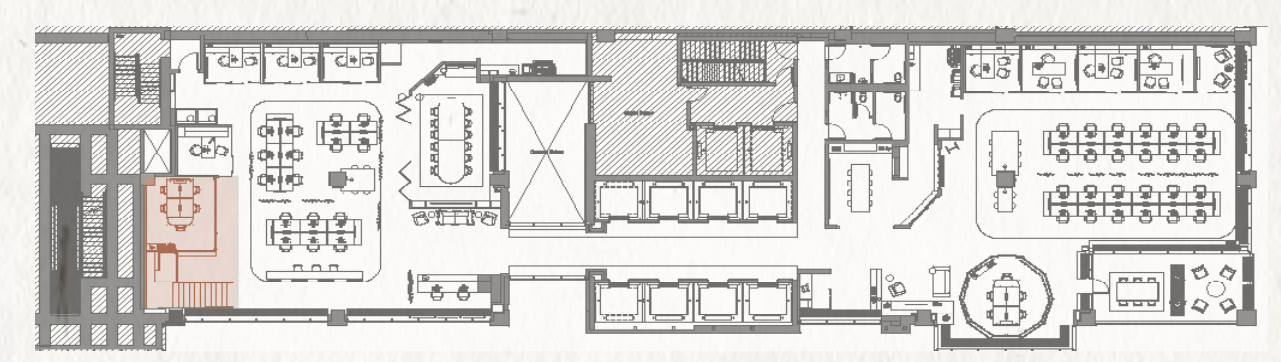


*5 Star  
Bar Stool  
Steelcase*



# STAIRCASE

The main **STAIRCASE** that leads to the mezzanine climbs over an industrial-shed-inspired meeting room. Nestled between the meeting room and the staircase is a **HUDDLE ROOM** where employees can either meet with a coworker to **COLLABORATE** in a private and cozy setting or work independently in a more casual posture.







MEZZANINE



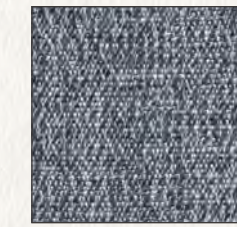
*Materials*



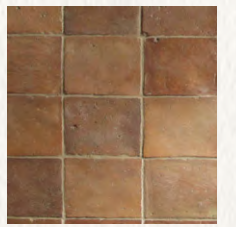
*Steel Metal*



*White Oak Wood*



*H&S Fabric*



*Reclaimed Tile Brick*

*FF&E*



*Thread Steelcase*



*Cleon Sofa Blu Dot*

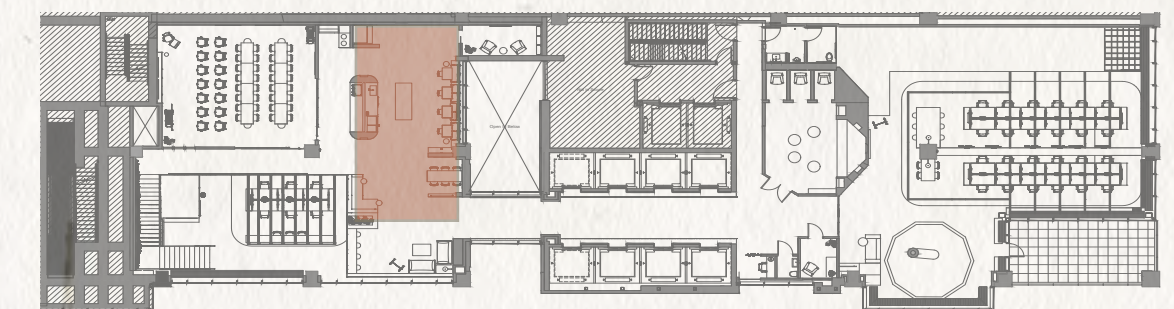


*Note Table Blu Dot*



MEZZANINE

The **MEZZANINE** is zoned to welcome both **PRODUCTIVITY** and **SOCIABILITY**. The training room is located here and is equipped with large sliding doors that open up to create a more open plan which allows the space to be **FLEXIBLE** in usage. While training is in session doors are kept closed, but when open the space becomes an extension of the cafe and can be used for company events.





NORTH SECTION  
PERSPECTIVE



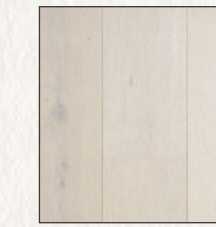
CAFE



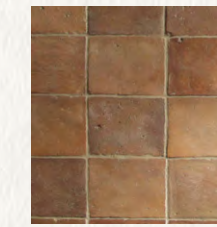
Materials



Aged Zinc Metal



White Oak Wood



Reclaimed Tile Brick



Designtex Fabric

FF&E



Grid Table  
Established & Sons



Cassette Sofa  
Established & Sons

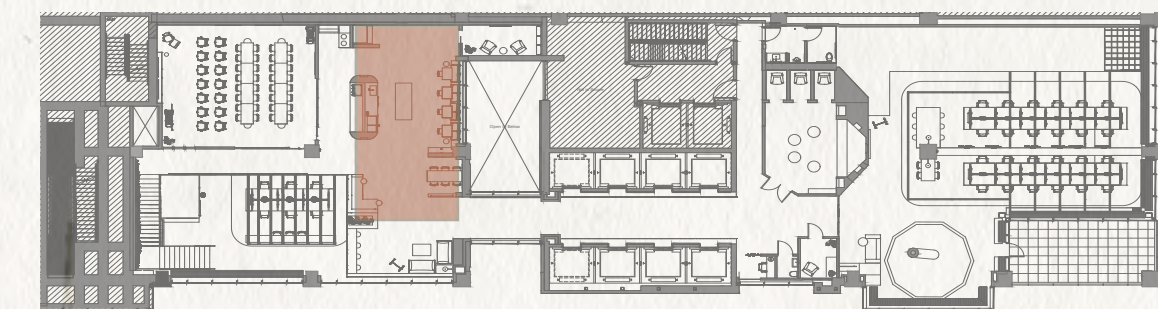


Radice Stool  
Mattiuzzi



CAFE

The **CAFE** on the mezzanine offers a **VARIETY OF SEATING** and **POSTURES** to accomodate different group sizes and needs. The kitchen in the cafe is dual-sided with one side dedicated to food prep and the other dedicated to beverages. This not only prevents crowding in one area but the beverage side acts as a refreshment station for hosting in the training room. On the far end of the cafe is a large planter box with room to grow vegetables; a farm to table **WELLNESS** aspect of the cafe.

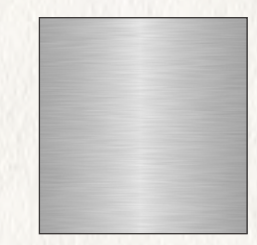




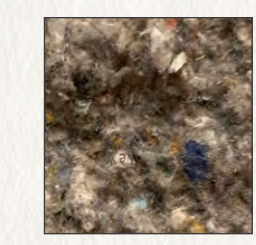
WELLNESS CHAPEL



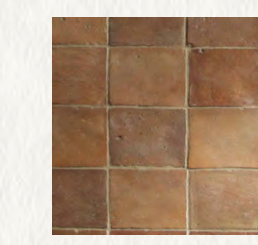
Materials



Steel Metal



Recycled Wool Insulation



Reclaimed Tile Brick



Aged Cement

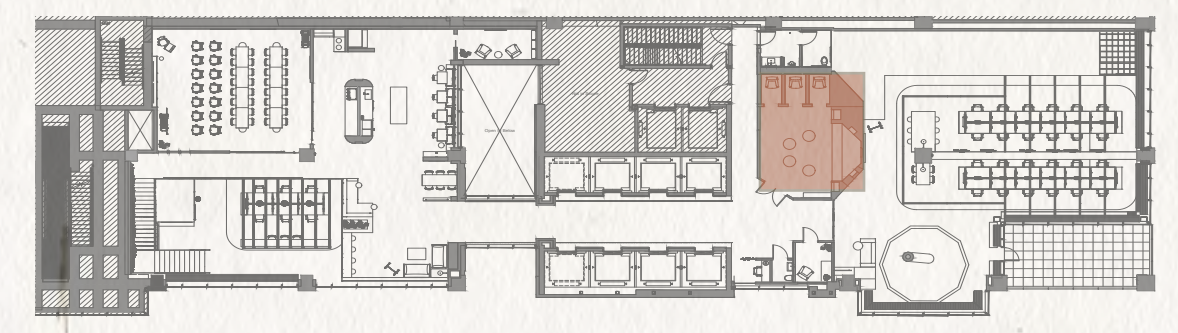
FF&E



Bumper Ottoman Blu Dot

# WELLNESS CHAPEL

The **WELLNESS CHAPEL** is located across the bridge on the mezzanine. This entire side is dedicated to **REFLECTION** and **INDEPENDENT WORK**. The Wellness Chapel offers its visitors a variety of ways to unwind and nourish the soul-body connection. There are mats for stretching or yoga, and ottomans to gather for a group prayer. There are also three private rooms equipped with lounge chairs, red light therapy and headphones for sound-bathing.



*"I dreamed that I had died  
And gone to my reward  
A job in heaven's textile plant  
On a golden boulevard."*

- Thank You -

